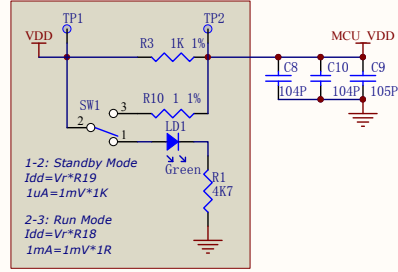
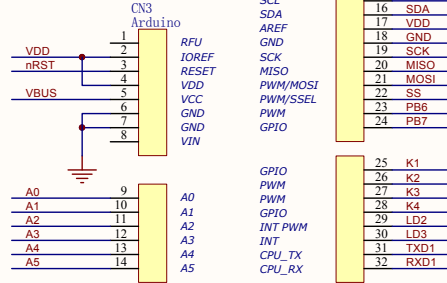


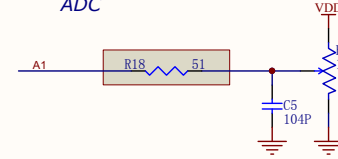
MCU & Current measurement



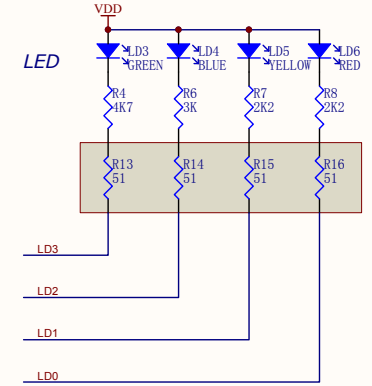
Arduino Interface



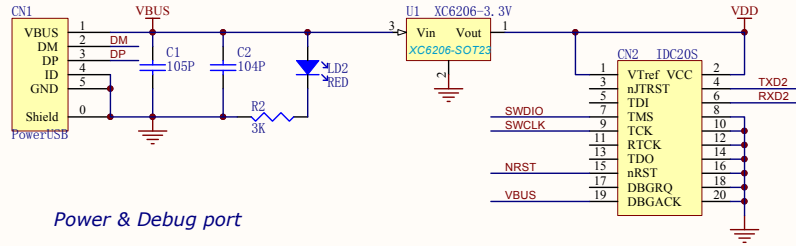
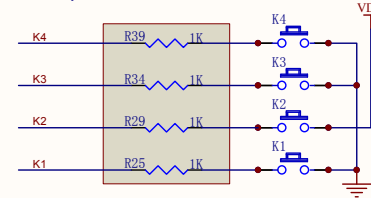
ADC



LED

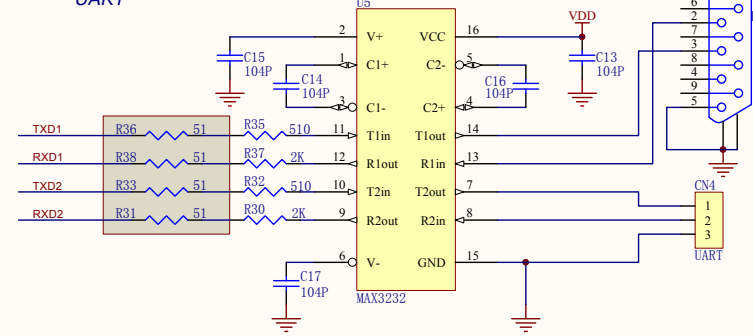


Key

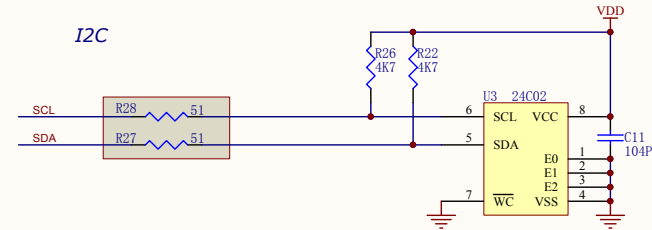


Power & Debug port

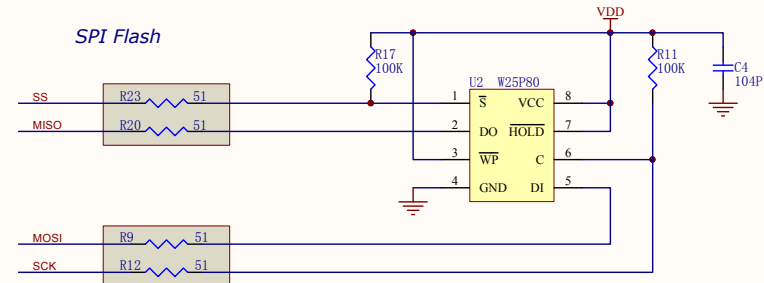
UART



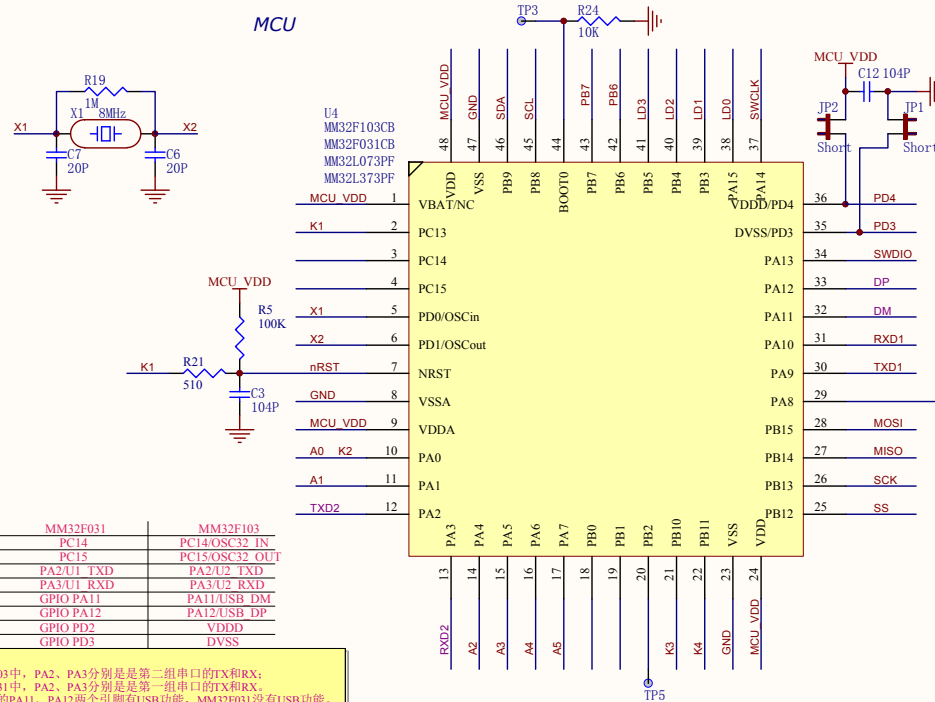
I2C



SPI Flash



MCU



U3	MM32F031	MM32F103
Pin 3	PC14	PC14/OSC32 IN
Pin 4	PC15	PC15/OSC32 OUT
Pin 12	PA2/U1_TXD	PA2/U2_TXD
Pin 13	PA3/U1_RXD	PA3/U2_RXD
Pin 32	GPIO PA11	PA11/USB_DM
Pin 33	GPIO PA12	PA12/USB_DP
Pin 35	GPIO PD2	VDDD
Pin 36	GPIO PD3	DVSS

Notes:
 1. In MM32F103, PA2, PA3 are the second group of TX and RX;
 In MM32F031, PA2, PA3 are the first group of TX and RX.
 2. MM32F103 has PA11, PA12 two pins for USB function. MM32F031 does not have USB function.
 3. MM32F103 MiniBoard: JP1 and JP2 two 0 ohm resistor are not connected.
 MM32F031 MiniBoard: JP1 and JP2 two 0 ohm resistor are not connected.