

### Install Keil MDK Version 5

- **Download** and install the MDK Core from [www.keil.com/mdk5/install](http://www.keil.com/mdk5/install)

### Add Software Pack using the Pack Installer

- **Keil::STM32F1xx\_DFP** – STMicroelectronics STM32F1 Series Device Support

### Power up the board

- Connect a USB power supply to the **Power** receptacle
- Connect the board to the PC using the **Trace Connector** and a debug adapter, for example ULINK<sub>pro</sub>

### Verify Installation using example projects provided in the Software Pack

- Copy an example using the Pack Installer. Compile, download to Flash, and debug the application. The provided examples are ready to run. Trace settings might have to be adapted.

### More Information

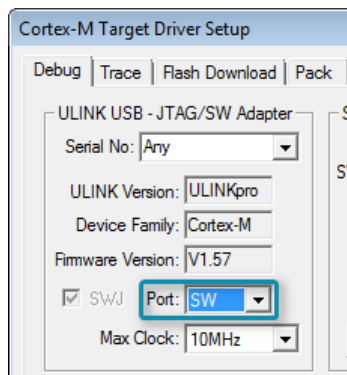
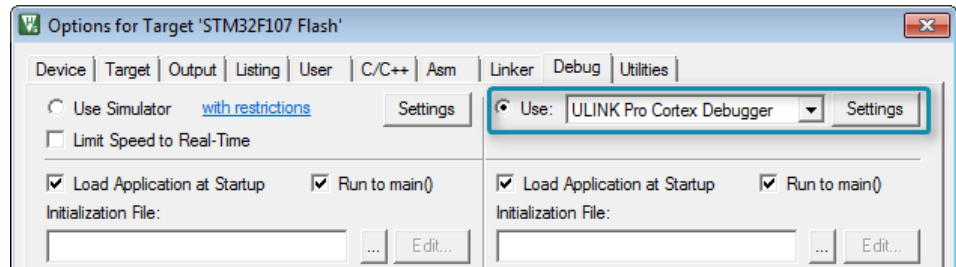
- Evaluation Board Description [www.keil.com/boards2/keil/mcbstm32c](http://www.keil.com/boards2/keil/mcbstm32c)
- MCBSTM32C User's Guide [www.keil.com/support/man/docs/mcbstm32c](http://www.keil.com/support/man/docs/mcbstm32c)

### Related Information

- MDK Version 5 [www.keil.com/mdk](http://www.keil.com/mdk)
- MDK-Professional Middleware [www.keil.com/middleware](http://www.keil.com/middleware)
- Learning Platform [www.keil.com/learn](http://www.keil.com/learn)

### ULINKpro Debug and Trace Adapter

Connect ULINKpro to the board's **Trace** connector and choose **ULINK Pro Cortex Debugger**.

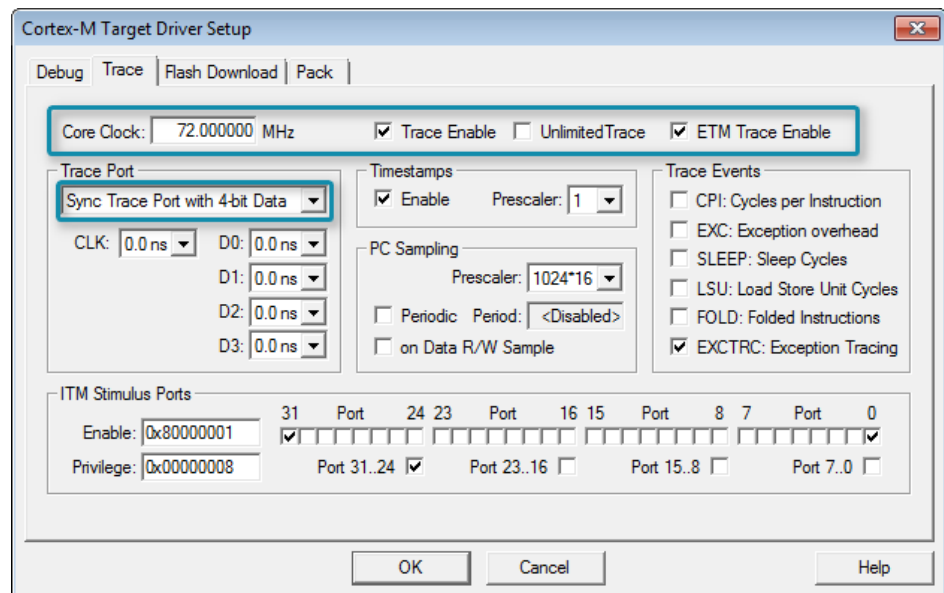


Click **Settings** and configure the **Debug** connection for Serial Wire Debug (SWD) by selecting the Port **SW**.

### Trace Settings

Configure trace by selecting the **Trace** tab and enter the correct CPU **Core Clock** speed as specified in your project. Check the **Trace Enable** box.

For complete instruction trace, select **Sync Trace Port with 4-bit data** and enable **ETM Trace Enable**.



### More Information

- Getting Started User's Guide [www.keil.com/gsg](http://www.keil.com/gsg)